

# Party Pack Hire Application Form

Date: \_\_\_\_ / \_\_\_\_ / \_\_\_\_ Phone Number: \_\_\_\_\_  
 Name: \_\_\_\_\_  
 Address: \_\_\_\_\_  
 Email: \_\_\_\_\_  
 Period: From \_\_\_\_\_ am/pm Date \_\_\_\_\_  
 To \_\_\_\_\_ am/pm Date \_\_\_\_\_

**Tupperware Table Pack**  
**Tupperware**® 12 x kids tumblers & plates \$15.00  
**Tupperware**® 1 x 8L drink dispenser & 2 x serving centres  
 1 x tables and 9 x chairs

**Fun in the Sack Pack**  
**FUN IN THE SACK - BE ACTIVE, HAVE FUN & GO GREEN** \$15.00  
 12 x Sack race, egg & spoon race,  
 3 legged race & ring tossing game.  
 1 x Parachute, 2 x bouncy sit on balls  
 4 pairs Teamwalkers *New*



**Jumpy Castle Pack** (please circle preferred Jumping Castle)  
**Jumping Castle** \$40.00 *or* \$50.00  
**Requires safe use & strict supervision**  
 Jumping castle, pegs & generator. "Magic Castle" 2.6m wide x 3.35m long x 2.45m high  
 "Superstar Bouncer" 3.65m wide x 4.55m long x 2.35m high

**'GO WILD! BORROW THE LOT AND SAVE \$15.00'** \$55.00 / \$65.00

## Pick-up & Return

All Party Pack items are stored at Bright Toy Library and must be picked-up at the Toy Library and returned the following week within 30 minutes of the Toy Library opening to enable it to be rehired.

## Book Early to Avoid Disappointment

When you book the party pack ensure your hire days are marked on the Toy Library calendar. We would usually like to see the pack picked up Saturday morning and dropped back the following Saturday morning.

## Planning Tips

Visit [www.funinthesack.com.au](http://www.funinthesack.com.au) for extra game ideas using the 'FUN IN THE SACK' party toys. You can also print off certificates & ribbons.

For party ideas check out the Kids Party & Cake books in the parent's book section of Toy Library.

Visit BANG toy shop for small party prizes – something that will be cherished not chucked.

Borrow some regular Toy Library toys to compliment the party pack such as the rollercoaster or big slide.  
 Book in advance for \$1.00

Check out spotlights  
[www.spartys.com.au](http://www.spartys.com.au) for party ideas.

# Party Pack Hire Terms & Conditions

## Keep it Safe

Adult supervision is required to ensure proper use of Party Pack items at all times.  
 Make sure toys and games provided is appropriate for the age of the child.  
 Use Party Pack items on clean green grass or an outdoor entertainment area – AVOID wet or dirty areas.

## Cleaning

Ensure all items are cleaned thoroughly before they are returned to Toy Library.  
 Tupperware items can be put in the dishwasher or hand washed in hot detergent.  
 The jumping castle can be vacuumed and any dirt cleaned with a hot soapy cloth, only pack up once it's dry. Fabric Sacks are machine washable in cold water.

## Jumping Castle

It is not a coincidence that jumping castles have a reputation for being 'dangerous'. Let a few kids jump around on a massive inflated pillow and your talking HIGH RISK SITUATION! In order for our Toy Library members to enjoy the privilege of being able to hire a jumping castle, all users must adhere to a strict safety policy to make this a long term, safe and viable option for the future. Conditions of hire include the following:

- Please read the instruction manual;
- The motor needs power at all times to inflate the jumping castle;
- Adults must continuously supervise children using the jumping castle. Adults must enforce rules to ensure safe play for all children using the jumping castle;
- Please ensure the jumping castle is blown up fully. Use only on flat grassy or soft surfaces. AVOID wet or dirty areas;
- Do not leave the jumping castle or motor in the rain;
- Please secure jumping castle with pegs (provided) before use and DO NOT blow up in strong winds;
- No shoes, food or drink allowed on the jumping castle;
- *Magic Castle*: Maximum of 3- 4 children or 135kg and age 8 and under;
- *Superstar Bouncer Castle*: Maximum of 5 children or 225kg and Max weight/user 45kg.

**Bright Toy Library is not responsible for any incidents that may occur in conjunction with using the jumping castle.**

## Bond

A \$50 cash bond is due at pick-up. Amount will be refunded when items are returned CLEAN & UNDAMAGED.

I \_\_\_\_\_ hereby apply for the hire of party pack items from the Bright Toy Library Inc. In the event of this hire, I agree to abide by the rules and constitution of the Bright Toy Library Inc. for the time being in force, and to indemnify the Bright Toy Library Inc. it's members and staff against all loss, liability, injury or damage how so ever caused, arising from borrowing by or through me of any toys, games or other items.

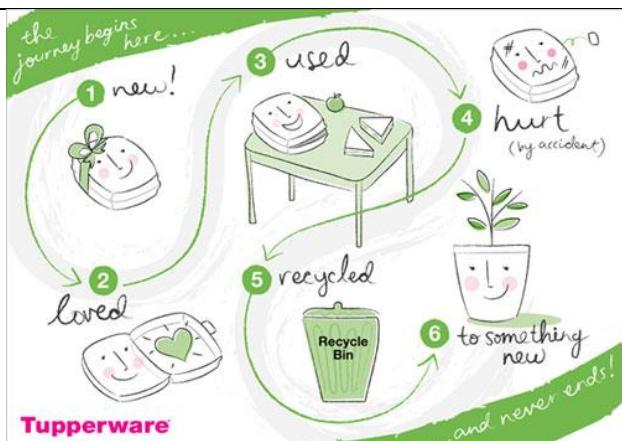
Signature of Hirer \_\_\_\_\_

**For all Party Pack bookings visit Bright Toy Library on Sat 9.30-11am  
 located at Alpine View Children's Centre, Deacon Avenue, Bright**

Amount Paid: \_\_\_\_\_ Receipt No: \_\_\_\_\_ Deposit Paid: \_\_\_\_\_ Deposit Returned: \_\_\_\_\_

Electrical Equipment Checklist completed and attached to this form upon return: \_\_\_\_\_

Notes: \_\_\_\_\_



## Caring for our Environment

By using Tupperware products for your children's party you can help reduce the impact disposable plates & cups have on the environment. Tupperware products that are returned to Tupperware are ground and recycled into plant pots, low grade pipe, builders' film and garbage bags.

## Our local Tupperware® Distributor

Annah McPherson  
 03 57511873 or 0429 050 278  
 annah.mcpherson@bigpond.com